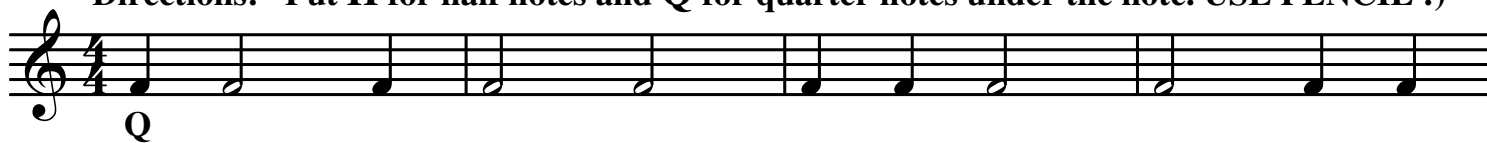


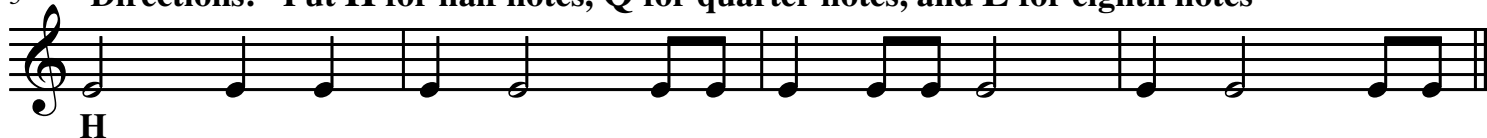
# THEORY QUIZZERS

## RHYTHM NOTE NAME QUIZZERS

Directions: Put **H** for half notes and **Q** for quarter notes under the note. USE PENCIL :)



5 Directions: Put **H** for half notes, **Q** for quarter notes, and **E** for eighth notes



## NOTE LETTER NAME QUIZZERS

9 Directions: Put the letter name under each note. USE PENCIL :)



## RHYTHM NOTE NAME QUIZZERS

Directions: Put **W** for whole notes, **H** for half notes, **Q** for quarter notes, and **E** for eighth notes

17 Add bar lines every 4 beats



## NOTE LETTER NAME QUIZZERS

25 Directions: Put the letter name under each note



**MUSIC ALPHABET:** Say "ABCDEFGGABCEFGABC..."

# THEORY QUIZZERS

## TIE QUIZZERS

Directions: Put the combined number of beats of the tied notes under the tie

A musical staff in 4/4 time with a treble clef. It contains two measures of music. The first measure has a quarter note on G4 tied to a quarter note on G4 in the second measure. Below the first measure, the number '4' is written.

A musical staff in 4/4 time with a treble clef. It contains two measures of music. The first measure has a half note on G4 tied to a half note on G4 in the second measure. Above the first measure, the number '5' is written.

## NOTE LETTER NAME QUIZZERS

Directions: Put the letter name under each note

A musical staff in 4/4 time with a treble clef. It contains two measures of music. The first measure has four quarter notes: G4, A4, B4, and C5. The second measure has four quarter notes: B4, A4, G4, and F4. The notes in the second measure have a flat sign.

A musical staff in 4/4 time with a treble clef. It contains two measures of music. The first measure has four quarter notes: B4, A4, G4, and F4. The second measure has four quarter notes: E4, D4, C4, and B3. The notes in the second measure have a flat sign.

## RHYTHM NOTE NAME QUIZZERS

Directions: H for half notes, Q for quarter notes, E for eighth notes, and S for sixteenth notes  
Add bar lines every 4 beats

A musical staff in 4/4 time with a treble clef. It contains two measures of music. The first measure has a half note on G4, a quarter note on A4, a quarter note on B4, and a quarter note on C5. The second measure has a quarter note on B4, a quarter note on A4, a quarter note on G4, and a quarter note on F4. Below the first measure, the letter 'H' is written.

A musical staff in 4/4 time with a treble clef. It contains two measures of music. The first measure has a quarter note on G4, a quarter note on A4, a quarter note on B4, and a quarter note on C5. The second measure has a quarter note on B4, a quarter note on A4, a quarter note on G4, and a quarter note on F4.

## MUSICAL MARKING QUIZZER

Directions: Write the name of the marking underneath each note

A musical staff in 4/4 time with a treble clef. It contains two measures of music. The first measure has four quarter notes: G4, A4, B4, and C5. The second measure has four quarter notes: B4, A4, G4, and F4. The notes in the second measure have a flat sign. Below the first measure, the word 'Staccato' is written.

## REST NAME QUIZZERS

Directions: Put W for whole rest, H for half rest, Q for quarter rest, and E for eighth rest

A musical staff in 4/4 time with a treble clef. It contains two measures of music. The first measure has a whole rest. The second measure has a half rest, a quarter rest, a quarter rest, and a whole rest. Below the first measure, the letter 'W' is written.

Why did the trombonist cross the road? To get to the other slide